







HOME



tellica®























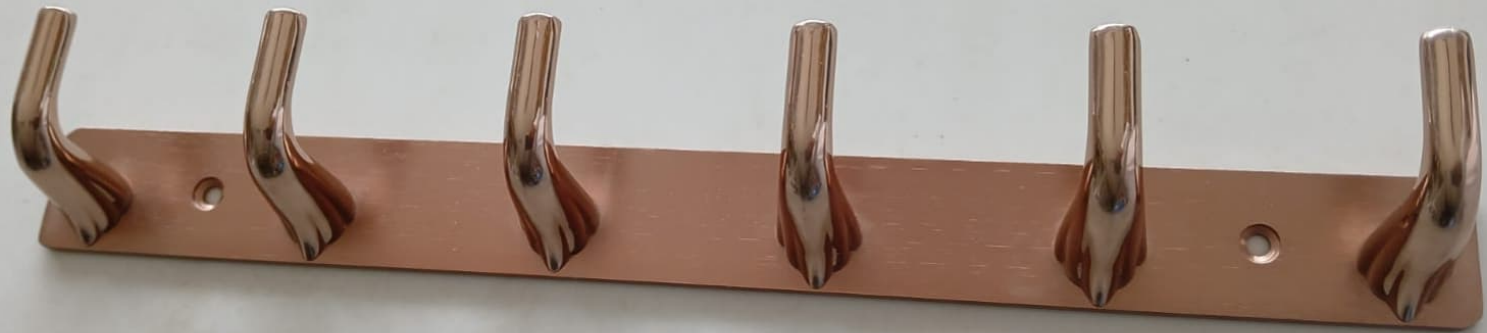








tellica®







AN ISO 9001 : 2008
CERTIFIED COMPANY

Premium Quality



tellica®

Hydraulic 2 Speed

HYDRAULIC DOOR CLOSER

HYDRAULIC DOOR CLOSER



tellica®

tellica

tellica



tellica®
PREMIUM HARDWARE
SOLUTIONS

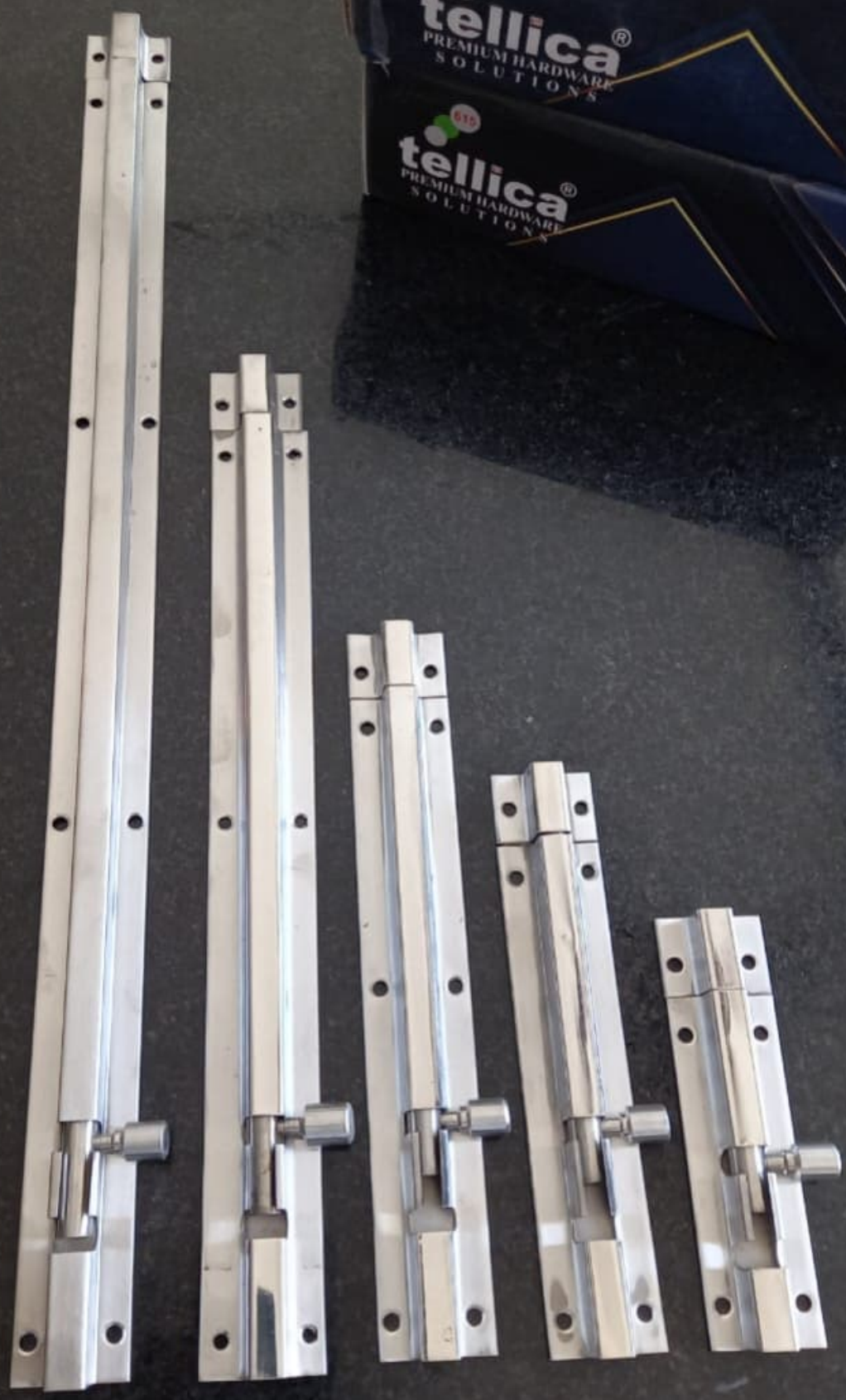
tellica®
PREMIUM HARDWARE
SOLUTIONS

tellica®
PREMIUM HARDWARE
SOLUTIONS









615
tellica®
PREMIUM HARDWARE
SOLUTIONS

615
tellica®
PREMIUM HARDWARE
SOLUTIONS













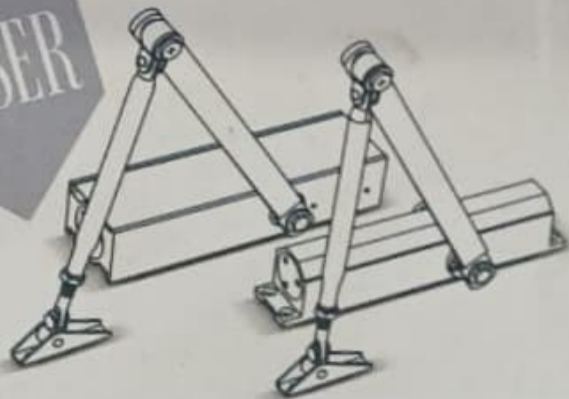
tellica®

Banj[®]

Door Closer

Complete Machining on
VMC & CNC

CLOSER



S-3564
CML-3938783

CE

AN ISO 9001 : 2008
CERTIFIED COMPANY

PLEZER[®]
HYDRAULIC DOOR CLOSER

IS 3564 : 1995



CM/L-7600070612

5 Lacs Cycles Tested

Hydraulic 2 Speed Adjustable

Hydraulic 2 Speed



UNIQUE
HYDRAULIC DOOR CLOSER

UNIQUE

UNIQUE

RAMAYA 815
Crafted With Luxury

3,20,000 Cycle Tested

2
Years
GUARANTEE



Premium
Hydraulic Door Closer



High Strength · Perfect Finish · Best Quality

RAMAYA
Crafted With Luxury

Premium
Hydraulic Door Closer



Control Clusters
Control Clusters

width Center

1-1/4"

(31 mm)

0-11/16"

(18 mm)



UNIQUE™

3-7/16"

3-5/8"

2-7/8"

Fixing and Installation of the Body of
Track Arms Connecting the Main Arms

tellica[®]

tellica[®]

615

815

tellica[®]
PREMIUM HARDWARE
SOLUTIONS

1
YEAR
WARRANTY



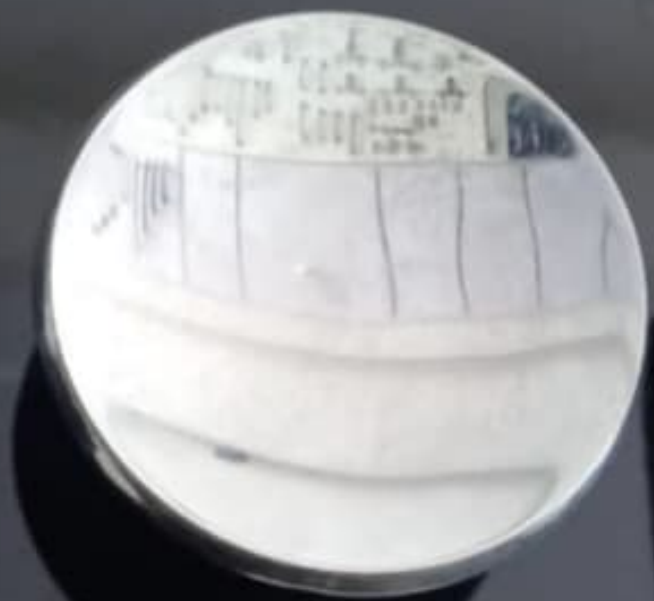
**HYDRAULIC
DOOR CLOSER**

More than **4,50,000** Cycle Tasted





24















































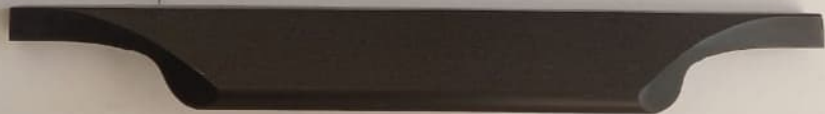




















815

tellica®
PREMIUM HARDWARE
SOLUTIONS





ellica®
PREMIUM HARDWARE
SOLUTIONS



815

tellica[®]
PREMIUM HARDWARE
SOLUTIONS



815

tellica®
PREMIUM HARDWARE
SOLUTIONS



615

815

tellica[®]
PREMIUM HARDWARE
SOLUTIONS



tellica[®]
PREMIUM HARDWARE
SOLUTIONS



815

tellica®

PREMIUM HARDWARE
SOLUTIONS



tellica®
PREMIUM HARDWARE
SOLUTIONS



615
815
tellica⁶¹⁵®
PREMIUM HARDWARE
SOLUTIONS



























*For safety
& security*



**M.T.
APPLE**



**M.T.
APPLE**



**75mm 9 Levers
PADLOCK**

**75mm 9 Levers
PADLOCK**













ARCHITECTURAL
HARDWARE
DOOR

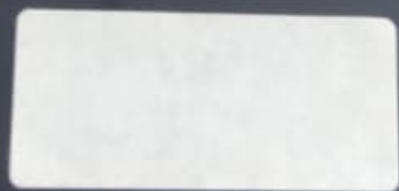
DOOR

DOOR
ARCHITECTURAL
HARDWARE
FITTINGS

ARCHITECTURAL
HARDWARE
DOOR

DOOR
FITTINGS
ARCHITECTURAL
HARDWARE
DOOR

DOOR
FITTINGS
ARCHITECTURAL
HARDWARE
DOOR



615
615
tellica®
PREMIUM HARDWARE
SOLUTIONS





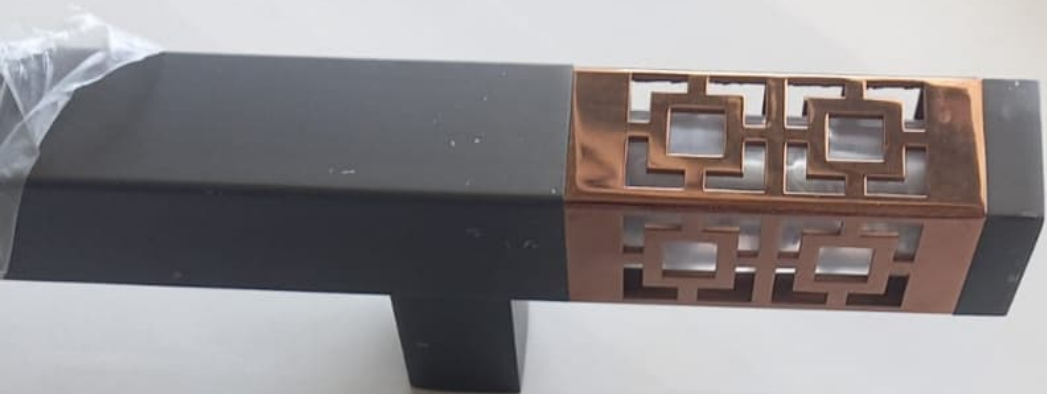






































































615

tellica
SIXER WHE

1 Set (4 Pcs.)

615

EL CASTOR



MADE IN INDIA
TEL 011 277 12345 67 89















100



tellica®
STAINLESS STEEL

150





(M7) 14X2-24

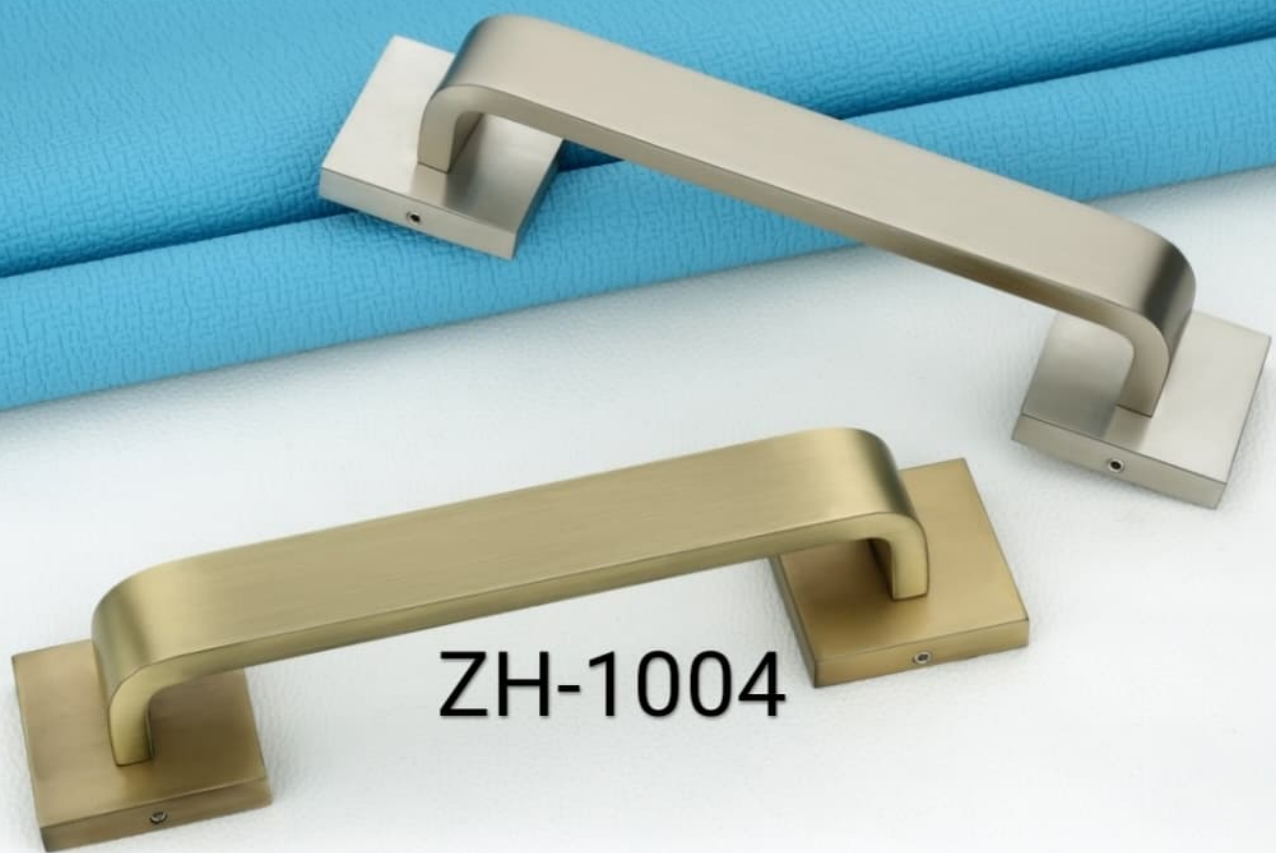
Kellieca[®]
STAINLESS STEEL

147 14X2-24



1209





ZH-1004



ROYAL®

SIZE: 6X19

S.S SCREWS
4.I.D.C ROHTAK

QTY: 500Nos

HEAD

ANTIQUE

CSK PH

ROYAL®

SIZE: 8X32

S.S SCREWS
4.I.D.C ROHTAK

QTY: 200Nos

HEAD

ANTIQUE

CSK PH

ROYAL®

SIZE: 8X32

S.S SCREWS
4.I.D.C ROHTAK

QTY: 200Nos

HEAD

ANTIQUE

CSK PH

ROYAL®

SIZE: 6X19

S.S SCREWS
A.I.D.C ROHTAK

QTY: 500Nos

HEAD

ANTIQUE

CSK PH

ROYAL®

SIZE: 8X32

S.S SCREWS
A.I.D.C ROHTAK

QTY: 200Nos

HEAD

ANTIQUE

CSK PH

ROYAL®

SIZE: 8X38

S.S SCREWS
A.I.D.C ROHTAK

QTY: 200Nos

HEAD

ANTIQUE

CSK PH

Neelgiri

STEEL

~~52-~~

3/4"

CHIP BOARD SCREW

Finish: (S.S)

QTY: 200PC

MRP: 243/-

CSK PH.

QTY: 200 PCS.

Neelgiri

STAINLESS STEEL
SCREWS



tellica[®]

CHIP BOARD SCREW

WARE[®]

1"
65

Finish: (S.S)
QTY: 200PC
MRP: ₹318/-
PKD By: tellica

CSK PH.
QTY: 100 PCS.

tellica[®]
METAL SCREWS



Hardened Self Tapping
Sheet Metal Screws

tellica[®]

PREMIUM HARDWARE
SOLUTIONS

8X32

CSK PH.
QTY:100 PCS.

Metal Screws

tellica[®]

METAL SCREWS



Hardened Self Tapping
Sheet Metal Screws

tellica[®]
WARE

1-1/2"

CHIP BOARD SCREW

QTY : 100Pcs

MRP : ₹242/-



615815

CSK PH.

QTY:100 PCS.

Pkd By : tellica Group Co.

tellica[®]

METAL SCREWS



Hardened Self Tapping
Sheet Metal Screws

Neelgiri

48 **19X6**

FINISH: (S.S.)

QTY: 200PC

MRP: 198/-

PKD By: tellica

K PH.
200 PCS.

Neelgiri

METAL SCREWS



Neelgiri

25X6

QTY: 200PC

MRP: 230

SCREWS

CSK PH.

QTY: 100 PCS.

Neelgiri

METAL SCREWS



Hardened Self Tapping
Sheet Metal Screws

Neelgiri

32X8

REWS

50

FINISH: (S.S.)

QTY: 100PCS

MRP: ₹188

PKD By: tellica

CSK PH.

QTY: 100 PCS.

Neelgiri

METAL SCREWS



Manufactured with Tolerances
According to IS: 2266

Neelgiri
REWS
CSK PH.
QTY: 100 PCS

₹
38X8
FINISH: (S.S.)
QTY: 100PC
MRP: ₹196/-
Pkg By: MIRA

Neelgiri
REWS
CSK PH.
QTY: 100 PCS

₹
32X8
FINISH: (S.S.)
QTY: 100PCS
MRP: ₹188
Pkg By: MIRA

Neelgiri
SCREWS
CSK PH.
QTY: 100 PCS

₹
25X6
QTY: 200PC
MRP: ₹230

Neelgiri
S
CPH.
200 PCS

₹
19X6
FINISH: (S.S.)
QTY: 200PC
MRP: ₹198/-
Pkg By: MIRA

Neelgiri
S
CPH.
200 PCS

₹
19X5
FINISH: (S.S.)
QTY: 200PC
MRP: ₹196/-
Pkg By: MIRA

615
tellica
PREMIUM HARDWARE
SOLUTIONS

Hardened Self Tapping Sheet Metal Screws

PREMIUM
SOL
Hardened Self Tapping
Sheet Metal Screws

Neelgiri

BLACK SCREW

3/4"

45

Finish: Black

QTY: 200PC

MRP: 148/-

PKD By: tellica

K PH.

200 PCS.

Neelgiri

STAINLESS STEEL
SCREWS



tellica[®]

BLACK SCREW

1 1/2"
SS

Finish: Black
QTY: 200PC
MRP: 210/-
PKD By: tellica

CSK PH.
QTY: 100 PCS.

tellica[®]
METAL SCREWS



Manufactured under Tellica
patent license

Neelairi

BLACK SCREW

³⁸
1-1/4"

Finish: Black

QTY: 100PC

MRP: 138/-

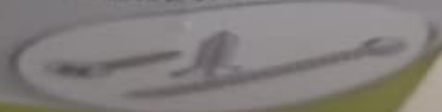
PKD By: tellica

CSK PH.

200 PCS.

SAWNEY - 28792 - 1316
Neelgiri

STAINLESS STEEL
SCREWS



Neelgiri

BLACK SCREW

SCREWS

2"

Finish: Black

QTY: 100PC

MRP: 198/-

PKD By: tellica



CSK PH.

QTY : 100 PCS.

Neelgiri

METAL SCREWS



PROTECTIVE COAT FINISH

Neelgiri

BLACK SCREW

SCREWS

1 1/2"

Finish: Black

QTY: 100PC

MRP: 168/-

PKD By: tellica

CSK PH.

QTY: 100 PCS.

Neelgiri

METAL SCREWS



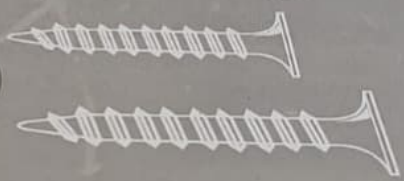
MADE IN INDIA

Email: marketing@tellica.com

Chipboard Screw



tellica®
PREMIUM HARDWARE
SOLUTIONS



tellica®
PREMIUM HARDWARE
SOLUTIONS



DRYWALL-3/4"

Finish: BLACK
ITEM : SCREW
QLT : IMPORTED
MRP : 650/-
QTY : 1000PCS



PKD By : tellica® PKD on : NOV 2024

MKT. BY:
CHANDIGARH HARDWEAR STORE



615

815

tellica[®]
PREMIUM HARDWARE
SOLUTIONS



Drywall Screw | Self Drilling Screw | Chipboard Screw



Email:- tushhargarg615@gmail.com

615

815

tellica[®]
PREMIUM HARDWARE
SOLUTIONS



Drywall Screw | Self Drilling Screw | Chipboard Screw



Email:- tushhargarg615@gmail.com





615
B15

tellica
PREMIUM HARDWARE
SOLUTIONS



Drywall Screw (3/4" x 19mm)

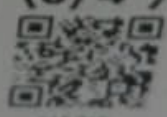
Email:- tushchhangar@tellica.com

615
B15
tellica
PREMIUM HARDWARE
SOLUTIONS



HYLEX(SDS) - 19 MM

ITEM : Bit Screw (3/4")
Finish: ZINK
MRP : 1285/-
QTY : 1000PCS



615-815

PKD By : tellica®

PKD on : JAN 2025

MKT. BY:
CHANDIGARH HARDWEAR STORE

615
tellica®
PREMIUM HARDWARE
SOLUTIONS
Drywall Screw | Self Drilling | Zinc Coated
Email:- tusshargarg@tellica.com

615
815
tellica®
PREMIUM HARDWARE
SOLUTIONS



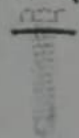
HEX SDS - 3/4" (10X20 MM)

ITEM : Gotti Screw (4.2X20MM)

Finish: ZINK

MRP : 900/-

QTY : 300PCS



615815

PKD By : tellica®

PKD on : JAN 2025

MKT BY:
CHANDIGARH HARDWEAR STORE











Chipboard Screw

SIZE : M4.0X50 (2")

Finish: ZINC
ITEM : SCREW
MRP : ₹780/-
QTY : 300PCS



PKD By: tellica® PKD on: APR 2025

MKT. BY:
CHANDIGARH HARDWEAR STORE

Chipboard Screw

SIZE : M4.0X25 (1")

Finish: ZINC
ITEM : SCREW
MRP : 1440/-
QTY : 800PCS



PKD By: tellica® PKD on: APR 2025

MKT. BY:
CHANDIGARH HARDWEAR STORE

Finish: ZINC
ITEM : SCREW
MRP : ₹1550/-
QTY : 150PCS



PKD By: tellica® PKD on: APR 2025

MKT. BY:
CHANDIGARH HARDWEAR STORE

Chipboard Screw

SIZE : M4.0X30 (1-1/4")

Finish: ZINC
ITEM : SCREW
MRP : ₹600/-
QTY : 600PCS



PKD By: tellica® PKD on: APR 2025

MKT. BY:
CHANDIGARH HARDWEAR STORE

Chipboard Screw

SIZE : M4.0X38 (1-1/2")

Finish: ZINC
ITEM : SCREW
MRP : ₹1198/-
QTY : 500PCS



PKD By: tellica® PKD on: APR 2025

MKT. BY:
CHANDIGARH HARDWEAR STORE

Chipboard Screw

SIZE : M5.0X75 (3")

Finish: ZINC
ITEM : SCREW
MRP : ₹1280/-
QTY : 150PCS



PKD By: tellica® PKD on: APR 2025



615
tellica®
PREMIUM HARDWARE SOLUTIONS

Chipboard Screw

SIZE : M5.0X50 (2")
Finish: ZINC
ITEM : SCREW
MRP : ₹890/-
QTY : 250PCS



PKD By : tellica® PKD on : APR 2025

MKT. BY:
CHANDIGHAR HARDWEAR STORE

615
tellica®
PREMIUM HARDWARE SOLUTIONS

Chipboard Screw

SIZE : M5.0X75 (3")
Finish: ZINC
ITEM : SCREW
MRP : ₹1280/-
QTY : 150PCS



PKD By : tellica® PKD on : APR 2025

MKT. BY:
CHANDIGHAR HARDWEAR STORE

615
tellica®
PREMIUM HARDWARE SOLUTIONS

Chipboard Screw

SIZE : M5.0X60
Finish: ZINC
ITEM : SCREW
MRP : ₹1150/-
QTY : 200PCS



PKD By : tellica® PKD on : APR 2025

MKT. BY:
CHANDIGHAR HARDWEAR STORE

615
tellica®
PREMIUM HARDWARE SOLUTIONS

Chipboard Screw

SIZE : M5.0X100 (4")
Finish: ZINC
ITEM : SCREW
MRP : ₹1550/-
QTY : 150PCS



PKD By : tellica® PKD on : APR 2025

MKT. BY:
CHANDIGHAR HARDWEAR STORE



tellica®
PREMIUM HARDWAX-LITE
SCREWS





615

615

tell®

PREMIER

S

615

815

tellica®

PREMIUM HARDWARE
SOLUTIONS



615

815

tellica[®]
PREMIUM HARDWARE
SOLUTIONS



615
815
tellica®
PREMIUM
SO





615

615

tollica®
PLUMBER HARDWARE
SOLUTIONS

615
615
tellica[®]
PREMIUM HARDWARE
SOLUTIONS













FLAXY











Bani
SS 304





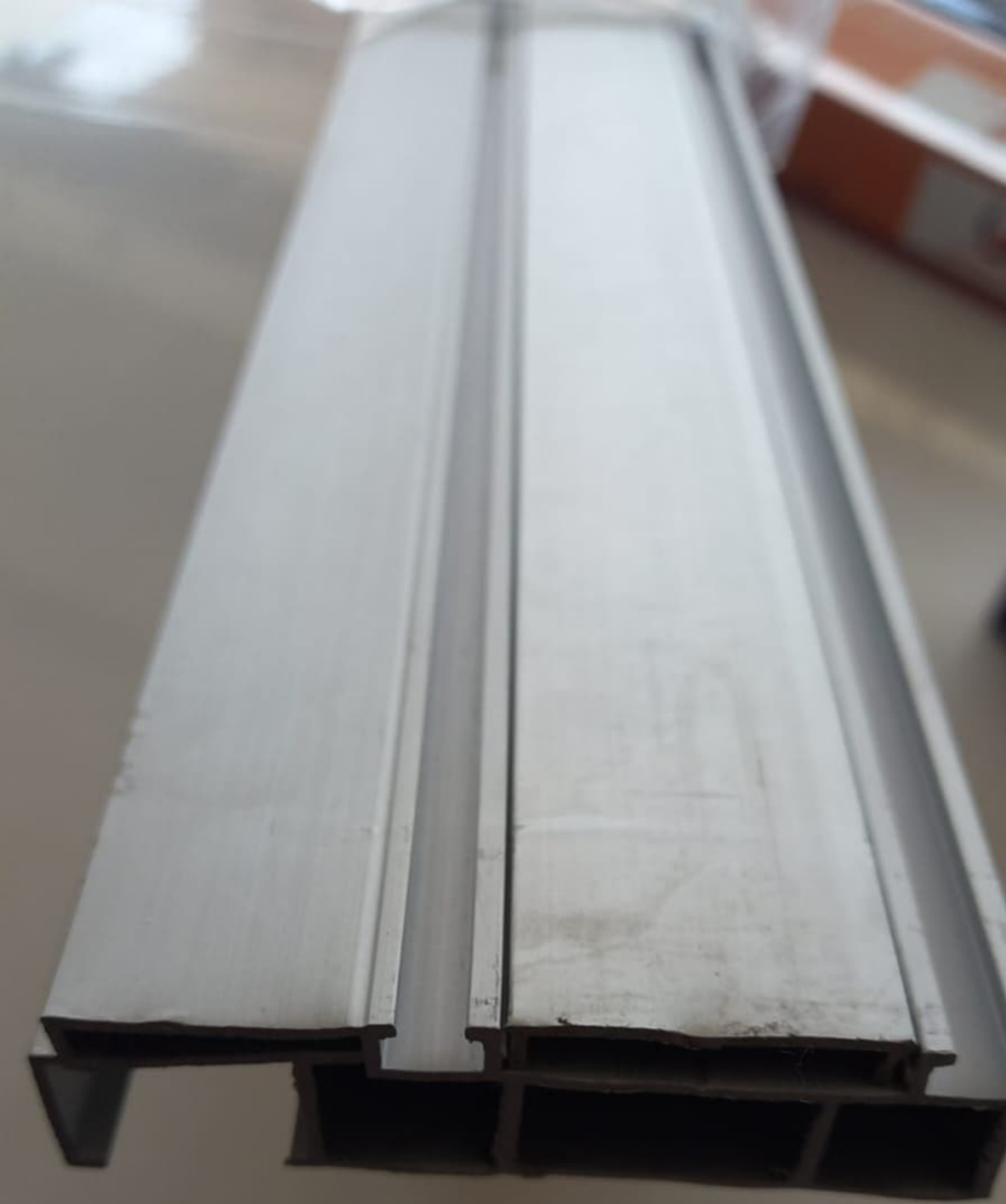
























tellica[®]
PREMIUM HARDWARE





103

104



H-1206
200mm

M:1003





H-1203
200mm



H-671



$\frac{96}{74}$ $\frac{160}{116}$ $\frac{224}{162}$ $\frac{288}{211}$



10-0510



tellica[®]
PREMIUM HARDWARE

tellica

(RAJAST, GUJARAT)

MODEL No. :

SIZE : 4, , 8, 10, 12,

FINISH :





H-719

96 160 224 288
74 128 176 230



tellica[®]
PREMIUM HARDWARE

tellica

HANDLE, HANDLE

MODEL No.: 1002-*1002*

SIZE: 4, 6, 8, 10, 12,

FINISH:





































Stellica®
PREMIUM HARDWARE
COLLECTION





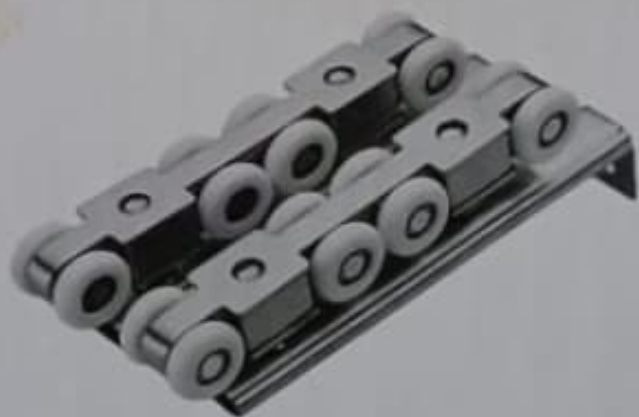












SLIDING DOOR ROLLER









